

At present, the group members maintain and develop the following libraries in R. The total number of libraries are 6:

[1\) alphahull: Computation of the alpha-shape and alpha-convex hull of a given sample of points in the plane.](#)

[2\) alphashape3d: Implementation of the 3D alpha-shape for the reconstruction of 3D sets from a point cloud.](#)

[3\) fda.usc: Functional Data Analysis and Utilities for Statistical Computing.](#)

[4\) NPCirc package.](#)

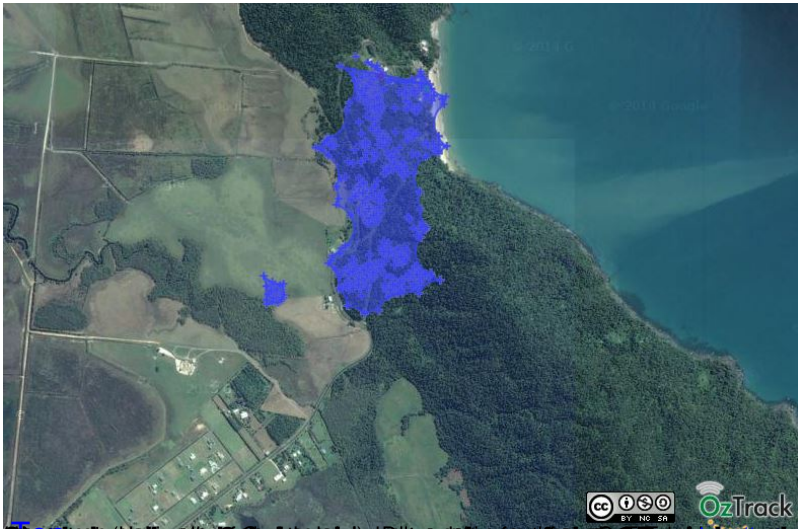
[5\) DCL: Double Chain Ladder Model.](#)

[6\) DOvalidation: Local Linear Hazard Estimation with Do-Validated and Cross-Validated Bandwidths.](#)

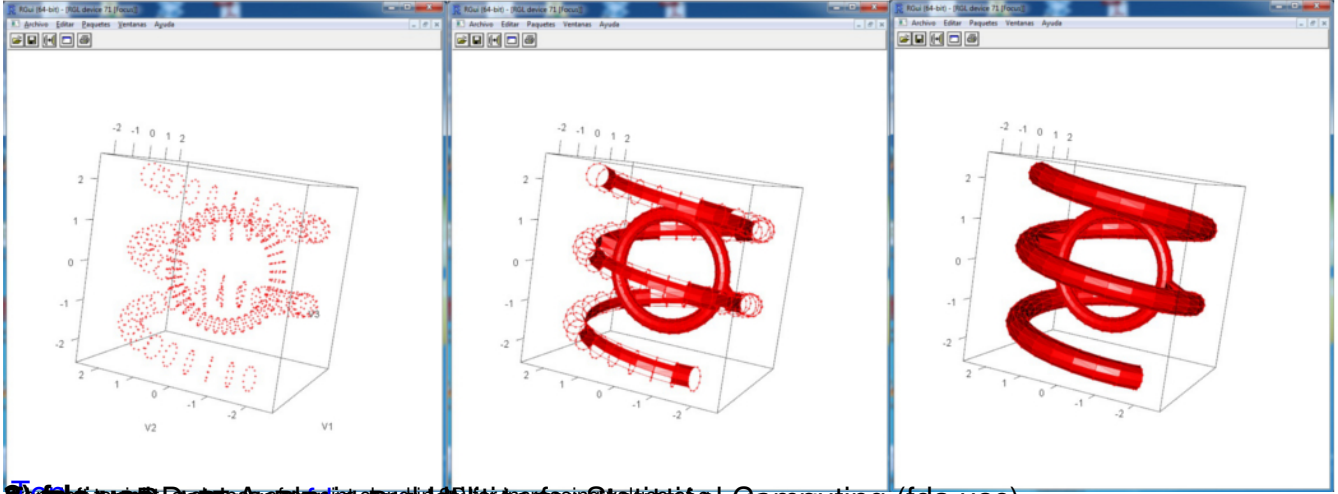
1) alphahull: Computation of the alpha-shape and alpha-convex hull of a given sample of points in the plane.

The concepts of alpha-shape and alpha-convex hull generalize the definition of the convex hull of a finite set of points. The programming is based on the duality between the Voronoi diagram and Delaunay triangulation. The package also includes a function that returns the Delaunay mesh of a given sample of points and its dual Voronoi diagram in one single object.

Version:	2.0
Published:	2015-03-20
Author:	Beatriz Pateiro-Lopez, Alberto Rodriguez-Casal
Maintainer:	Beatriz Pateiro-Lopez beatriz.pateiro@usc.es
Vignettes:	Generalizing the Convex Hull of a Sample: The R Package
alphahull	
CRAN:	http://cran.r-project.org/web/packages/alphahull/index.html

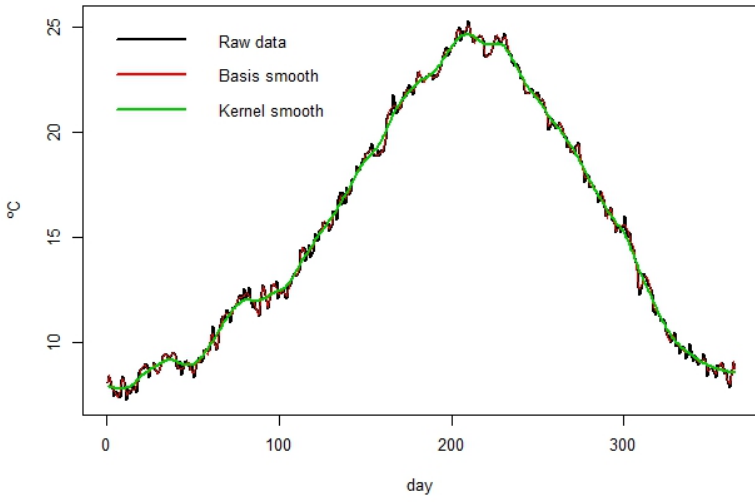


Prinsip Matematika aljabar linier dan kalkulus. Pendidikan Matematika dan Informatika. [Buletin Ilmiah: Jurnal Pendidikan Matematika](#) Vol 4 No 1 Desember 2017, pp. 1-5

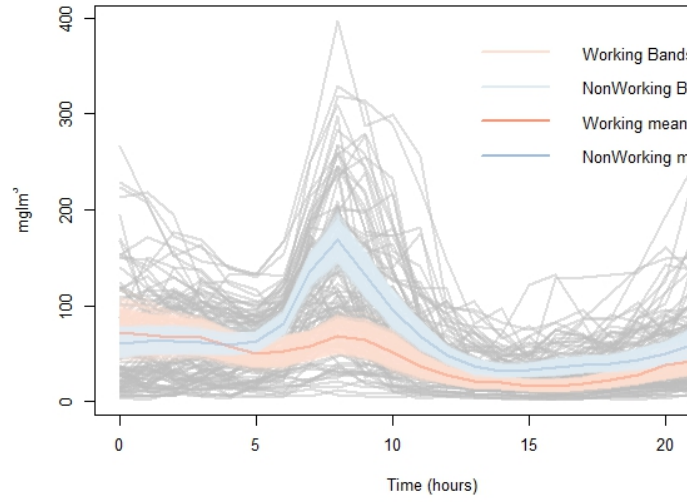


Penelitian Dan Penerapan Teknologi Pembelajaran Berbasis Komputer (fda.usc) [www.fda.usc.edu/technology-education-research/](#)
Rendy Permana, Ph.D., and Rina Firdausy, Ph.D. [https://doi.org/10.30605/te.v4i1.43](#)

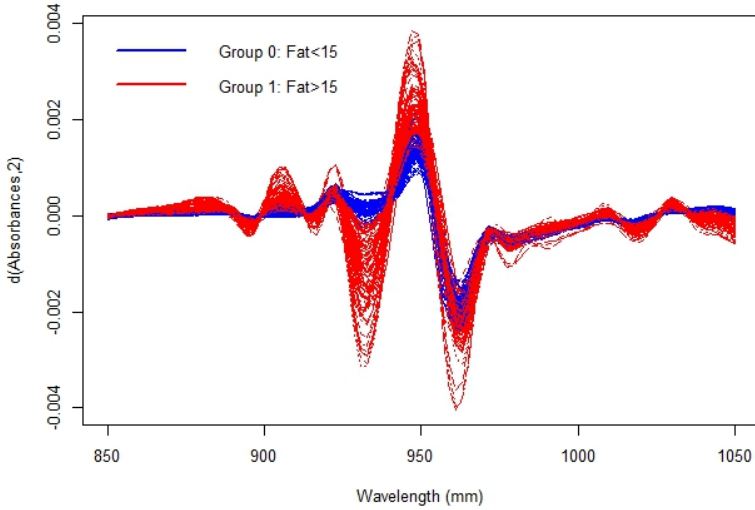
Barcelona airport temperature, Mean 1990-2009



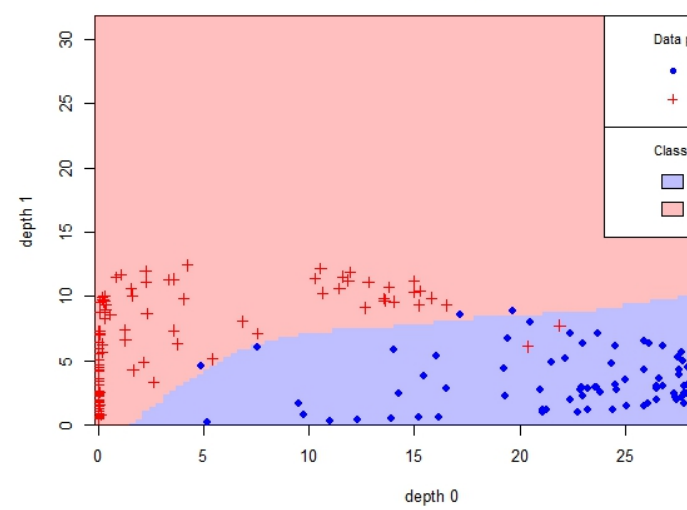
NOx levels in Poblenou (Barcelona)



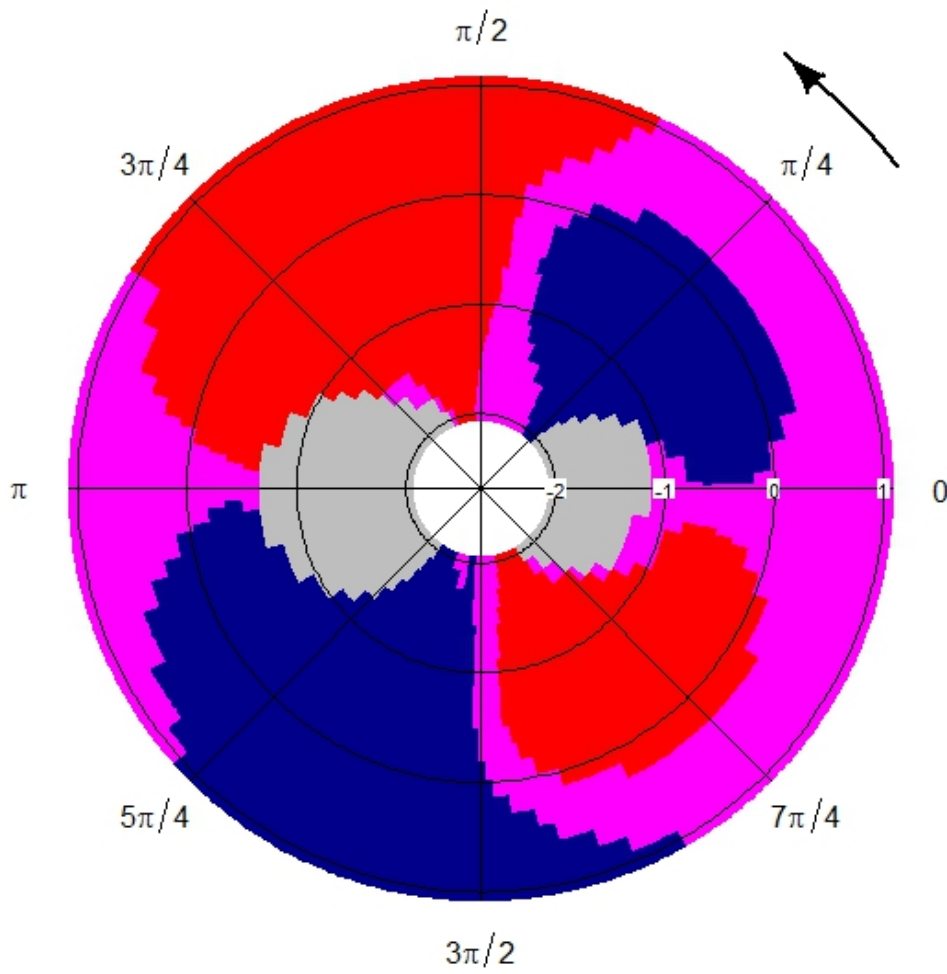
Spectrometric curves



DD-plot(mode,gam)



...



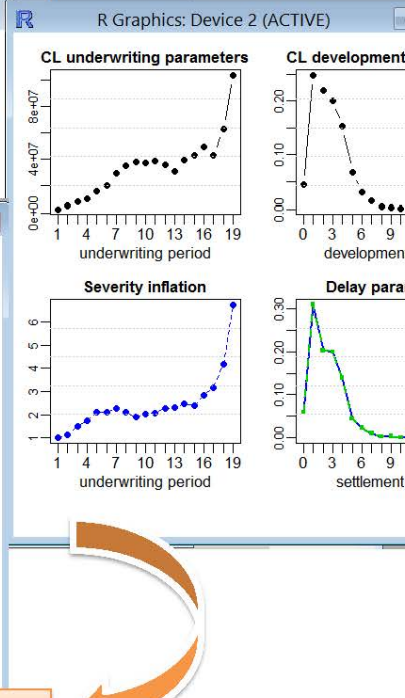
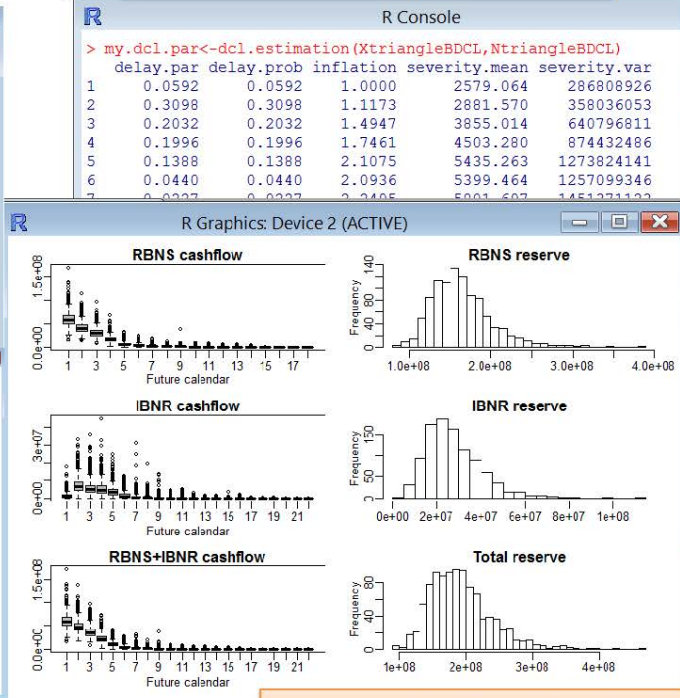
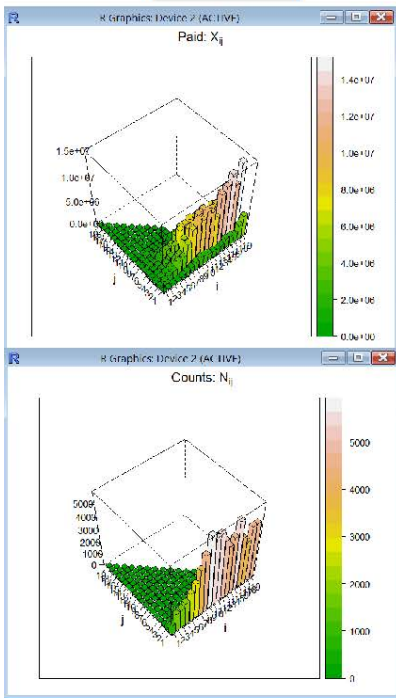
© 2014 by DCI, Inc. All rights reserved. This document is the property of DCI, Inc. and is not to be distributed, copied, or reproduced in any form without the written permission of DCI, Inc. For more information, contact DCI, Inc. at info@dcigroup.com or www.dci-group.com.
Do not use this information: info@smc-ar.gz, www.smc-ar.gz, info@dcigroup.com, or www.dci-group.com.
DCI, DCI Group, and the DCI logo are trademarks of DCI, Inc. All other trademarks are the property of their respective owners. www.dci-group.com, r-release: www.dci-group.com DC

Outstanding liabilities forecasting through DCL

Data

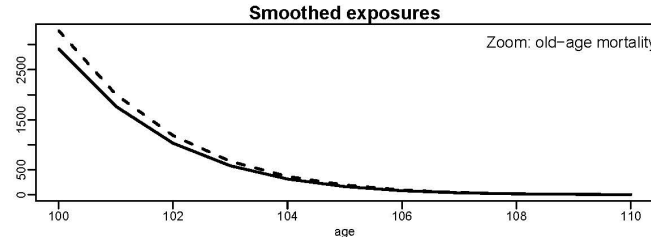
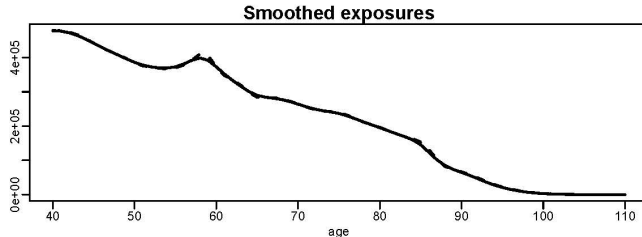
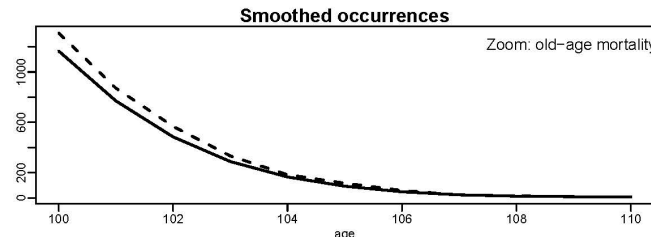
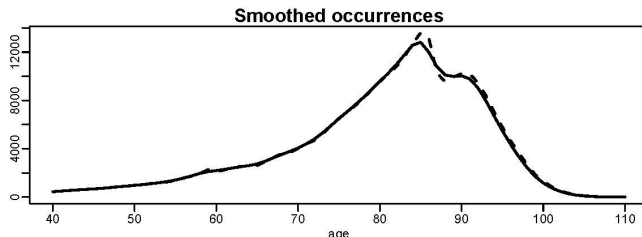
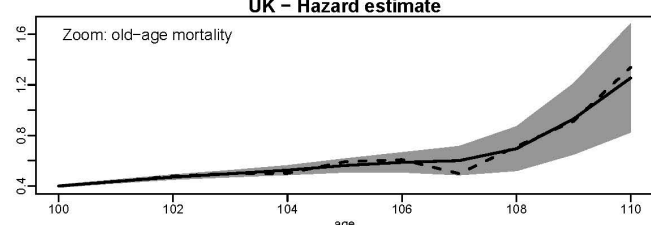
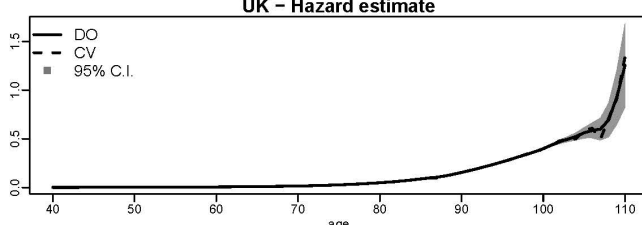
Estimated model parameters

Estimated time effects



The predictive distribution

UK - Hazard estimate



UK - Hazard estimate